



Department of Behavioral Health
Dawan Utecht, Mental Health Director/Public Guardian

Providing Quality Mental Health and Substance Abuse Services for the People of Fresno County

Mental Health Resources- Fresno County Rural Area

Central Valley Suicide Prevention Hotline

www.centralvalleysuicidepreventionhotline.org

Hotline Number 1-888-506-5991

National Suicide Prevention Hotline

www.suicidepreventionlifeline.org

Hotline Number 1-800-273-8255

Managed Care – Fresno County Dept. of Behavioral Health

<http://www.co.fresno.ca.us/DepartmentPage.aspx?id=15551>

Linkage to Medi-Cal providers within Fresno County

800-654-3937 or 559-600-4645



Fresno County Department of Behavioral Health- Children's Mental Health

<http://www.co.fresno.ca.us/DepartmentPage.aspx?id=46044>

Rural School Based Services

600-6892

Provides mental health services to children enrolled in the following school districts:

- Coalinga-Huron Unified School District
- Fowler Unified School District
- Kerman Unified School District
- Kings Canyon Unified School District- Reedley/Orange Cove
- Mendota Unified School District
- Parlier Unified School District
- Sanger Unified School District
- Selma Unified School District
- Sierra Unified School District-Prather/Tollhouse

Turning Point of Central California

<http://www.tpocc.org/>

Serves multiple levels of severity, offers therapy, case management and psychiatric services

Rural Mental Health Services

855-343-1057

Locations:	311 Coalinga Plaza	Coalinga	93210
	275 Madera Ave	Kerman	93606
	40 E. Minarets	Pinedale	93650
	1311 11 th Street	Reedley	93654
	225 Academy	Sanger	93657
	3800 Mc Cal Ave	Selma	93662

4441 E. Kings Canyon Road / Fresno, California 93702-3604

(559) 600-9180 ◆ FAX (559) 600-7674

Equal Employment Opportunity ◆ Affirmative Action ◆ Disabled Employer

www.co.fresno.ca.us ◆ www.fresno.networkofcare.org

Adventist Health

www.adventisthealth.org/central-valley/pages/central-valley-home.aspx

Provides mental health services:

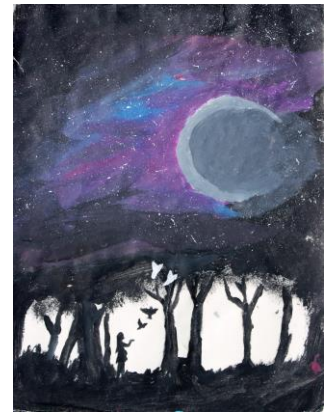
Coalinga	935-4282
Kerman	846-9370
Selma	891-2611

Aria Community Health Center

<http://ariachc.org/riverdale>

Provides mental health services

3554 W. Mt Whitney	Riverdale	867-4000
--------------------	-----------	----------



Comprehensive Youth Services-Functional Family Therapy Program

www.cysfresno.org 229-3561

Provides family therapy for children ages 11-17 in rural areas of Fresno County
Accepts medi-cal for some programs

Eminence

<http://eminencehc.com/index.html>

Substance Use Treatment

Referrals by on-line or phone or school staff referrals

7225 N First Street #101	Fresno	221-8100
--------------------------	--------	----------

Locations: various school sites in the following communities/school districts

Coalinga
Huron
Kerman
Kings Canyon Unified- Reedley/ Orange Cove
Sanger/Del Rey
San Joaquin
Selma



EPU

www.epuchildren.org

Main office	229-2000	or	One Call For Kids	225-1102
-------------	----------	----	-------------------	----------

Offers various mental health services for children.

Kings View

www.kingsview.org

Substance Abuse Program – Offers services for men and women 18 years of age and over

1822 Jensen Ave #102	Sanger	875-6300
----------------------	--------	----------

Homeless Program		256-4474
------------------	--	----------

Mennonite Central Committee

On-Site Counseling Program provides counseling services on a sliding scale fee

1010 G. Street	Reedley	453-8045
----------------	---------	----------

Prodigy

www.prodigy-hc.com

888-885-5580

Provides group and individual therapy for substance abuse treatment to adolescent's ages 12 to 18 with Medi-cal in the following school districts:

Caruthers Unified School District
Firebaugh-Las Deltas Unified School District
Fowler Unified School District



Promesa Behavioral Health

<http://promesabehavioral.org/>

439-5437

Provides anger management and substance abuse groups to Mendota Unified School District students ages 12-18

Referral from the school district required for services

Trauma Intervention Program

www.tipfoothill.org

Auberry/Prather/Tollhouse area 279-9674

Provides emotional support to residents of the Auberry/Prather/Tollhouse and surrounding foothills area who may be in crisis. Services are provided by volunteers.

United Health Centers

<http://public.uhcofsjv.org/?q=node/69>

Accepts Medi-Cal and patients on sliding fee scale, serves mild to moderate acuity

16928 11 th Street	Huron	1-800-492-4227
517 S. Madera Ave	Kerman	1-800-492-4227
121 Barboza St	Mendota	1-800-492-4227
445 11 th Street	Orange Cove	1-800-492-4227
650 Zediker Ave	Parlier	1-800-492-4227
6425 W Bowles Ave	Raisin City	1-800-492-4227
2502 E Jensen Ave	Sanger	1-800-492-4227

Uplift Family Services

<http://emqff.org/>

248-8550

Accepts Medi-cal

Provides mental health services to children as well as parental support

Valley Health Team

<http://www.vht.org/behavioral-health.html>

Accepts Medi-Cal and patients on sliding fee scale, serves mild to moderate acuity

927 O Street	Firebaugh	659-3037
449 S Madera Ave	Kerman	364-2970
702 S Eighth Street	Kerman	364-2975
21890 W Colorado	San Joaquin	693-2462

Westcare California

Westcare.com

Sanger

237-3420

Offers outpatient substance abuse treatment to Sanger Unified School District Students ages 12-17 and young adults ages 18-21

Referral from the school district required for services.

Other Helpful Resources

211 <http://Uwfm.org>

Call 211

Information and referral line for a variety of services and assistance.

Alcoholics Anonymous

www.aa.org

24 hour line 559-221-6907

Locations:

Auberry-	Big Sandy Rancheria Gym 37387 Auberry Rd Sierra Lutheran Church 32410 Rockhill Ln	Thursdays- 2:30 pm Mondays and Thursdays- 7pm Sundays- 5:30pm, Fridays- 5:30 pm (Mondays- Closed Meeting Alcoholics Only)
Coalinga-	First Presbyterian Church 475 Sunset St Grange Hall 221 E. Valley Street	Mondays, Thursdays, Fridays- 7pm Mondays, Fridays, Saturdays-7pm, Tuesdays-12pm
Firebaugh-	Firebaugh Fellowship United Methodist Church 1660 O Street	Tuesdays, Thursdays, Saturdays- 7pm
Fowler-	Fowler Baptist Church 507 Merced St	Tuesday and Thursdays- 7pm
Kerman-	Bethany Lutheran 5022 N Madera Ave	Mondays and Wednesdays- 7pm Saturdays- 9am
Kingsburg-	Kingsburg Fellowship Arcadian Building 1100 Sierra St	Mondays/Wednesdays/Thursdays-12pm&7:30 pm Tuesdays -12pm&7pm, Fridays-12pm & 6pm Saturdays-9am & 7:30pm, Sundays -9am & 7pm
Minkler-	Book Study Group- Big Book Meeting 18250 E Kings Canyon Rd	Wednesday- 7pm
Pine Flat-	American legion Post 159 30801 Sunnyslope Rd	Tuesdays- 7 pm
Reedley-	Good Shepherd Church 1445 N Frankwood Reedley Mennonite Church 1362 L. Street Heritage Church (Women Only) 1920 F Street	Mondays-7:30pm Sundays- 7:30pm Thursdays- 7 pm
Sanger -	St. Mary's Catholic Church- Big Book Meeting 2590 E North Ave Community Church 1610 Jensen Ave	Mondays- 7pm Tuesday & Thursdays- 7pm
Selma-	First Christian Church- Cellar 2026 Arrants St.	Fridays- 7:30pm
Shaver Lake-	Firehouse 41690 Tollhouse Rd	Saturdays 7:30pm
Squaw Valley-	Bear Mountain Library 30733 E Kings Canyon Rd	Last Friday 7:30pm



A & J Social Services Community Center

Offers fee based DUI programs

661 S. Madera Ave	Kerman	93630	846-8444
749 G Street	Reedley	93654	637-1036
3410 N. McCall #109	Selma	93662	896-3593

Boys and Girls Club of Fresno County

[Http://bgclubfc.org](http://bgclubfc.org)

266-3117

Offers various programs for children at different locations throughout Fresno County

5705 Carmel Street, Unit 255	Del Rey	93616	888-0302
1661 Allardt Drive #51	Firebaugh	93622	659-3774
36332 P. St #226	Huron	93234	945-7199
190 Straw Street	Mendota	93640	655-3002
1705 Anchor Street	Orange Cove	93646	289-3602
923 Center Street	Orange Cove	93646	626-7026
1040 Fett Drive #131	Parlier	93648	646-5122
100 N. East	Reedley	93654	743-7537
322 K. Street Unit 19	Sanger	93657	399-3201
730 Recreation Ave	Sanger	93657	465-6540

Celebrate Recovery Sites

www.celebraterecovery.com

Pleasant Valley Christian Center	160 E Birch	Coalinga	Tuesdays 6pm	935-2944
The Worship Center Church	2830 E Manning	Fowler	Thursdays 6:30pm	316-4274
The Father's House of Kerman	990 S 4 th Street	Kerman	Thursdays 6:30pm	270-5877
Common Grounds Coffee House	1310 Draper	Kingsburg	Tuesdays 6:30pm	859-2464
South Valley Community Church	1050 W. Bush Street	Lemoore	contact for times	762-7625
Redeemer's Church	819 Parlier Ave	Reedley	Mondays 6:30pm	248-6984

Centro La Familia

<http://centrolafamilia.org>

302 Fresno Street Suite 102

Fresno

237-2961 or 1-877-294-3772

Support Group Locations:

Firebaugh
Orange Cove

Emergency Food Pantries

http://www.needhelp-payingbills.com/html/fresno_food_pantries.html

Sierra Lutheran Church	32410 Rock Hill Ln	Auberry	855-8989
Food give away every 2 nd Saturday and 4 th Wednesday 9am-10am			
Del Rey Community Center	10649 E Morro	Del Rey	888-2272
Food give away every 2 nd Tuesday from 9am-9:30am			
Westside Family Services		Huron	
Food give away 4 times per month			945-1022
Kingsburg Community Center	1139 Draper St	Kingsburg	897-7961
Food give away Monday's 9:30-12 and Tuesday-Friday's 9am-12pm			
*Must show proof of Kingsburg residence			



Full Gospel Tabernacle 519 E 11th St. Reedley 638-2739
 Food give away every 4th Saturday 9am to 11am
 Fresno Economic Opportunities Commission 263-1000
 Food distribution in various location throughout Fresno County

Fresno Economic Opportunities Commission 263-1000

www.fresnoeoc.org

Offers income based child care, free summer meals program for children ages 1-18, food distribution and Head Start for children ages infant to 5 years.

Full Gospel Church

1225 12th Street Firebaugh 659-0744
 Provides inpatient faith based substance abuse treatment for males.

Housing authority

www.fresnohousing.org

Firebaugh	1625 Allardt Dr	Firebaugh	659-3084
Huron	36200 Giffen Ave,	Huron	945-2857
Orange Cove	1201 Adams Ave,	Orange Cove	626-2035
Parlier	1030 E Parlier Ave	Parlier	646-2778
Sanger	2415 5th St	Sanger	875-7169

Lemoore Christian Aid 924-2229

Huron residents can be helped every 60 days with clothes and grooming supplies

Marjaree Mason Center

www.mmcenter.org

Offers free support group every Wednesday from 10:30am-11:30am
 1010 G. Street Reedley 237-4706

Narcotics Anonymous

www.na.org

First Presbyterian Church		
475 Sunset Avenue	Coalinga	Thursdays-8pm, Saturdays-8pm
Delrey Community Baptist Church		
5259 South Portola	Delray	Mondays- 7pm
Fowler Baptist Church		
507 East Merced Street	Fowler	Wednesdays – 7pm
Arcadian Building		
1100 Sierra Street	Kingsburg	Fridays – 7:30pm
Reedley One Story Grey House		
2260 13th Street	Reedley	Tuesdays and Fridays- 7:30pm
Riverdale Faith Baptist Church		
Marks and Kruger Avenue	Riverdale	Saturdays – 3pm
First Baptist Church		
14th & O Street	Sanger	Thursdays- 7pm
First Christian Church		
2026 Arrants	Selma	Mondays – 7pm



Parenting Classes

Firebaugh –	The Children’s Corner 1960 River Lane, Firebaugh, CA	659-7740
Huron-	Migrant Head Start 16901 W. Tornado Ave, Huron, CA	945-2441
Mendota-	Migrant Head Start 435 Sorenson, Mendota, CA	655-3087
	Centro La Familia 1246 Belmont Avenue Mendota, CA	237-2961
Reedley-	Cal Safe 10026 S. Crawford, Reedley, CA	305-7390
	Parenting Classes offered at Washington School 1250 K Street, Reedley, CA	305-7270

Parlier Holistic Cultural and Education Wellness Center

<http://hcewc.org>

Provides culturally, linguistically appropriate education, trainings, linkages and referral services to the un-served and underserved consumers in Fresno County.

580 Tulare Street Parlier 646-3837

Rape Counseling Center

<http://rcsfresno.org>

Carmen Meza Center

838 “O” Street Firebaugh 659-0232

Monday-Friday 8-5

Services offered at no-cost to client

Teen Challenge

www.teenchallenge.org

387-5132 or 549-6657

A strictly faith based residential treatment program for substance abuse.

Men’s facility in Reedley

Women’s facility in Bakersfield.

